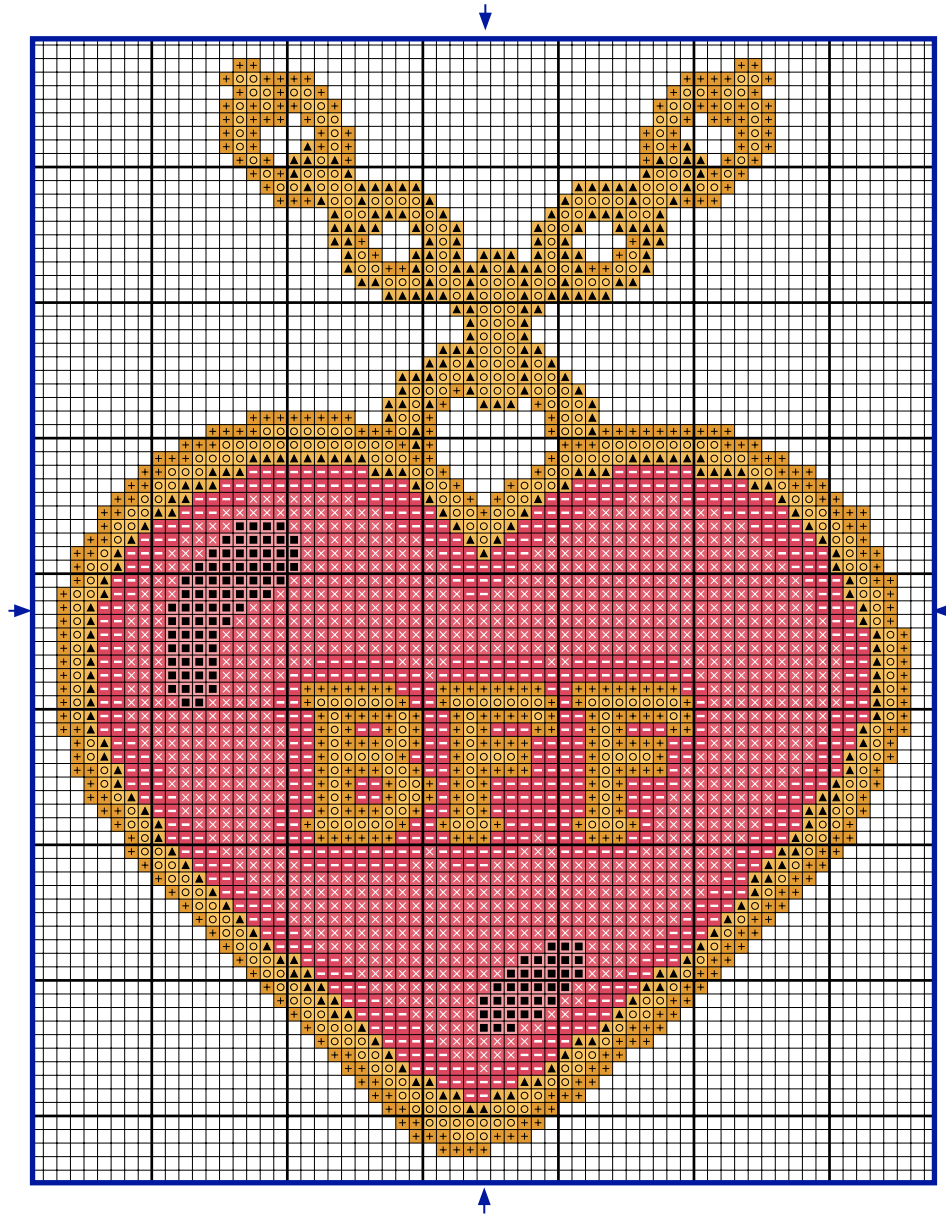


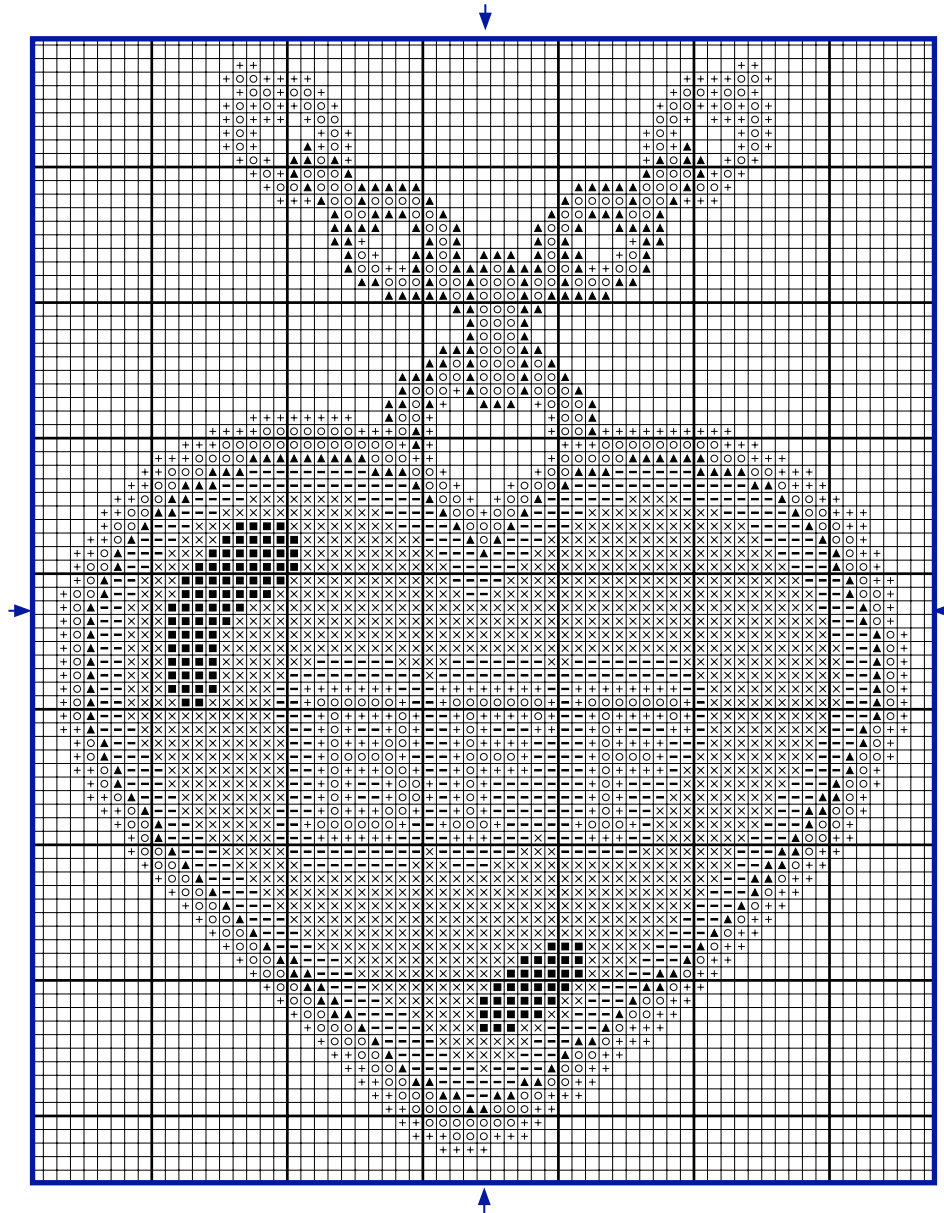
# BFF NECKLACE COLLIER BFF

COLOURED CROSS STITCH CHART  
DIAGRAMME PONT DE CROIX EN COULEURS



# BFF NECKLACE COLLIER BFF

CROSS STITCH CHART - DIAGRAMME PONT DE CROIX



© 2023 / ALL RIGHTS RESERVED WORLDWIDE

DMC LIBRARY - BIBLIOTHÈQUE DMC

# BFF NECKLACE

## COLLIER BFF

GETTING STARTED - COMMENCER

### TOOL KIT / FOURNITURES

DMC MOULINÉ ART. 117 EMBROIDERY THREAD / FILS MOULINÉ ART. 117 DMC  
CROSS STITCH FABRIC / AIDA / TOILE AIDA  
CROSS STITCH NEEDLE / AIGUILLE  
EMBROIDERY HOOP (OPTIONAL) / TAMBOUR (OPTIONNEL)  
SCISSORS / CISEAUX

DESIGN SIZE / DIMENSIONS DESSIN  
12,5 X 15,5 CM / 4,92 " X 6,01 "

THE SIZE OF YOUR DESIGN DEPENDS ON THE CROSS STITCH FABRIC YOU CHOOSE. THE HIGHER THE FABRIC'S "COUNT" (IE NUMBER OF CROSS STITCHES PER INCH), THE SMALLER THE STITCHES AND THEREFORE YOUR DESIGN. WE RECOMMEND BEGINNERS START WITH 14 COUNT AIDA (THE MOST COMMON CROSS STITCH FABRIC), WHICH IS WHAT WE HAVE BASED OUR DESIGN SIZE ON.

LA TAILLE DE VOTRE DESSIN DÉPEND DE LA TOILE POINT DE CROIX QUE VOUS CHOISISSEZ.

PLUS LE NOMBRE DE POINT DE CROIX PAR CENTIMÈTRE EST ÉLEVÉ, PLUS LES POINTS ET LA BRODERIE SERONT PETITS. NOUS RECOMMANDONS AUX DÉBUTANTS DE COMMENCER EN UTILISANT UNE TOILE AIDA 5,5 PTS/CM (LA TOILE DE POINT DE CROIX LA PLUS UTILISÉE), SUR LAQUELLE NOUS AVONS BASÉ NOTRE DESSIN.

# BFF NECKLACE

## COLLIER BFF

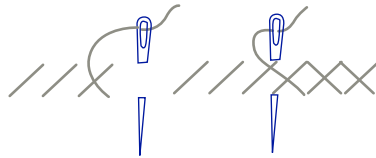
GETTING STARTED - COMMENCER

### STITCHES AND COLOURS YOU'LL USE



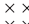









#### LÉGENDE : POINTS ET COULEURS

## CROSS STITCH

### POINT DE CROIX



MOULINÉ EMBROIDERY THREAD / FILS MOULINÉ

SYMBOL SYMBOLE	COLOUR COULEUR	N° SKEINS* N° D'ÉCHEVETTES*
 	761	x1
 	760	x1
 	3712	x1
 	744	x1
 	3822	x1
 	3821	x1

© 2023 / ALL RIGHTS RESERVED WORLDWIDE

DMC LIBRARY - BIBLIOTHÈQUE DMC

\* Based on stitching with the number of strands shown above, onto 14 count Aida. / \* Basé sur le nombre de brins préconisé au-dessus, sur une toile Aida 5,5 pts/cm.